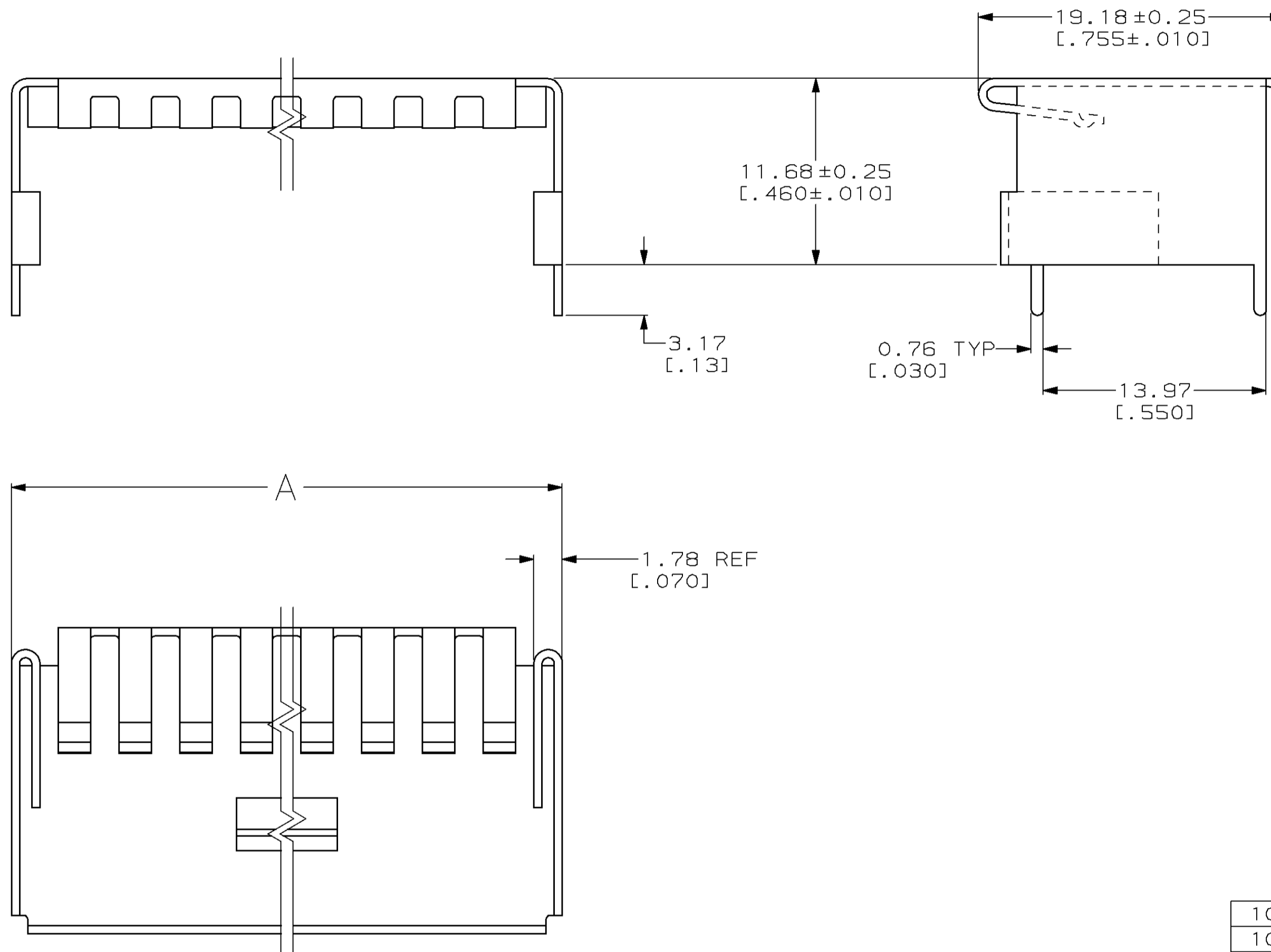


THIS DRAWING IS UNPUBLISHED. RELEASED FOR PUBLICATION
 © COPYRIGHT 19 BY AMP INCORPORATED. ALL RIGHTS RESERVED.

| LOC | | DIST | | REVISIONS | | | |
|-----|-----|----------------------|-----------|-----------|------|--|--|
| P | LTR | DESCRIPTION | DATE | DWN | APVD | | |
| | K | REV PER 0010-0226-96 | 23-MAR-96 | EB | JH | | |
| | L | REV PER 0310-0192-96 | 10-DEC-96 | EB | TE | | |
| | M | REV PER 0621-0073-98 | 12JUN98 | BH | MC | | |



1 NUMBER OF POSITIONS PERTAINS TO ASSOCIATED COMPONENTS.

| | | | |
|----------------------|---------------|-----------------|-------------|
| 102792-5 | 30.73 [1.210] | 20 | 1-102791-0 |
| 102792-4 | 68.83 [2.710] | 50 | 102791-8 |
| 1-102792-0 | 81.53 [3.210] | 60 | 102791-5 |
| 102792-7 | 25.65 [1.010] | 16 | 102791-3 |
| 102792-1 | 18.03 [0.710] | 10 | 102791-2 |
| 102792-9 | 38.35 [1.510] | 26 | 102791-1 |
| USE WITH PART NUMBER | A | NO OF POSN 1 | PART NUMBER |

| | | | | |
|---|--|---|---|------------------------|
| THIS DRAWING IS A CONTROLLED DOCUMENT. | | DWN E. BRANDBERG 23-MAR-96 | AMP Incorporated Harrisburg, PA 17105-3608 | |
| DIMENSIONS: mm [INCH] | | CHK J. HERRINGTON 23-MAR-96 | NAME D. TROUT 23-MAR-96 | |
| TOLERANCES UNLESS OTHERWISE SPECIFIED: 0 PLC ± 1 PLC ± 2 PLC ±0.13 [0.005] 3 PLC ± 4 PLC ± | | APVD D. TROUT 23-MAR-96 | PRODUCT SPEC - | |
| MATERIAL COPPER ALLOY 0.51 [0.020] THICK | | FINISH 0.00076 [0.00030] MIN PRE-TIN | APPLICATION SPEC - | WEIGHT - |
| ANGLES ± | | NAME SHELL, HEADER, AMPMODU, DOUBLE ROW, 2.54 [0.100] ⌀, RIGHT ANGLE | | |
| | | SIZE A2 | CAGE CODE 00779 | DRAWING NO C=102791 |
| | | SCALE 4:1 | | SHEET 1 OF 1 |
| | | CUSTOMER DRAWING | | REV M |

102791